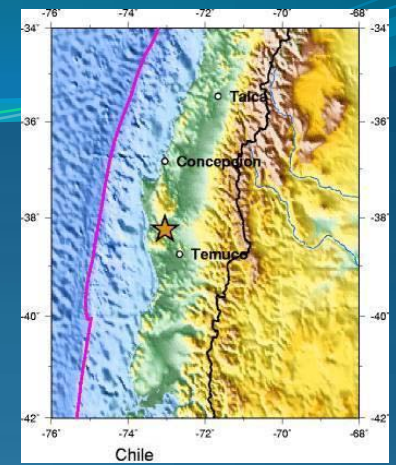
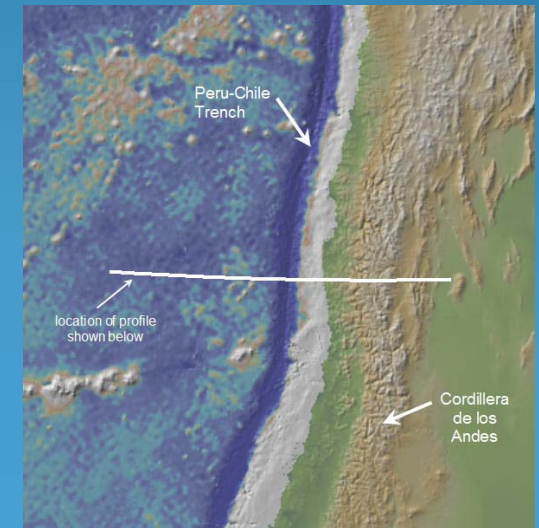
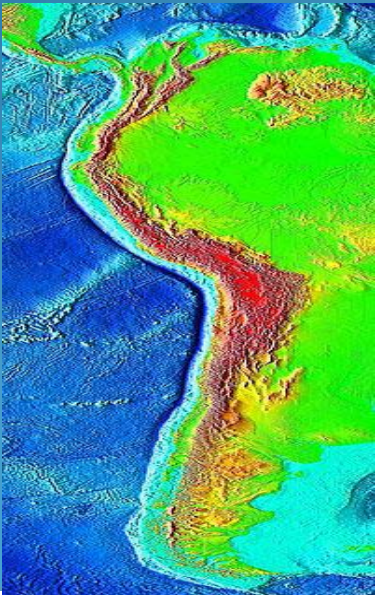


# Peru-Chile Trench

## By. Spencer Harrall

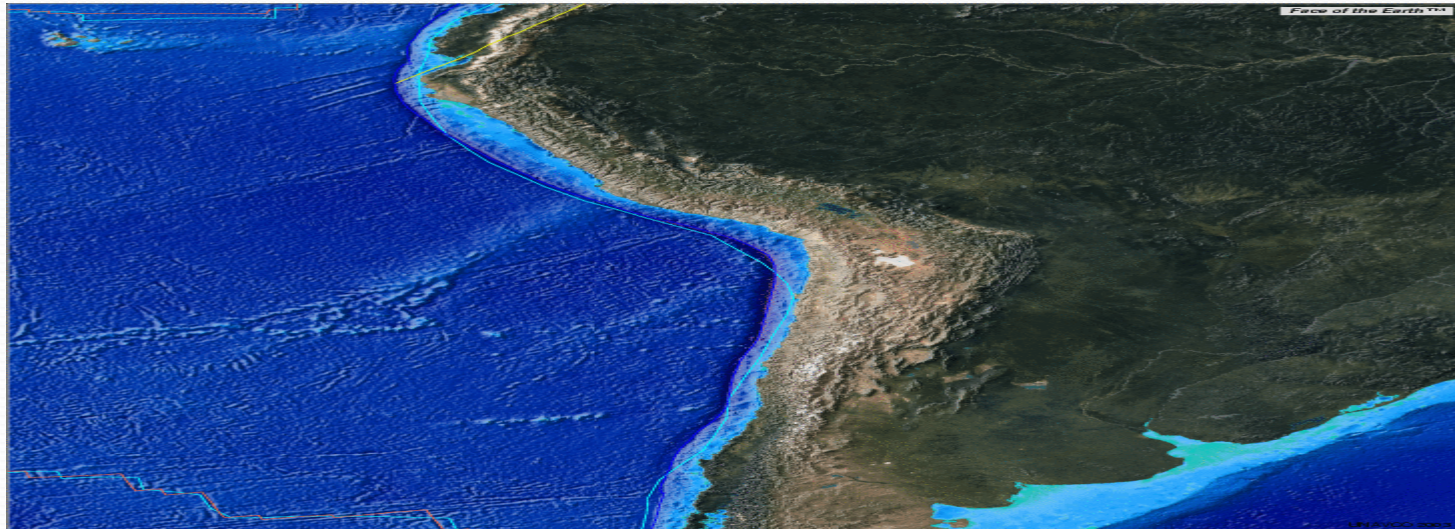


- The Peru-chile trench looks fun but..



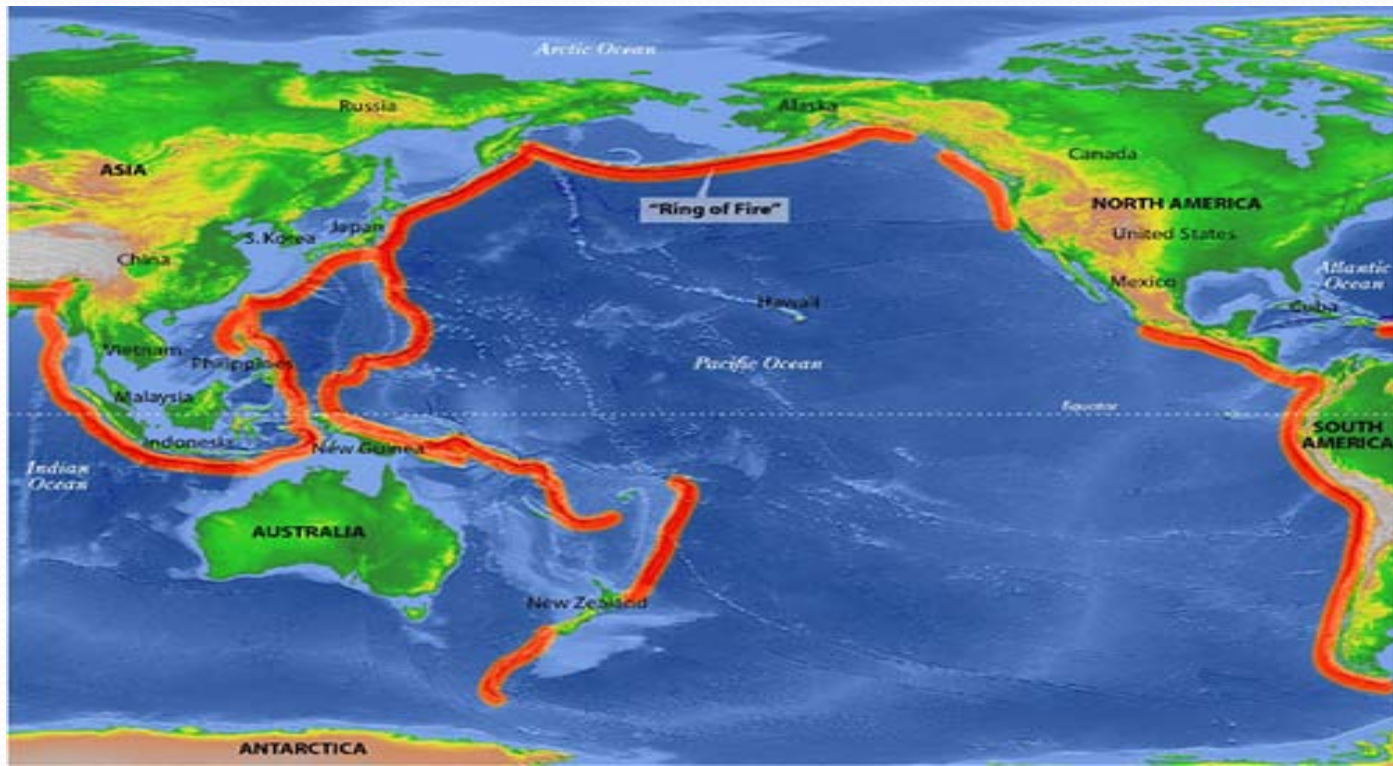
# Description

- The Peru-Chile Trench is located off the coast of Peru & Chile.
- It is in the Ring of fire which expands around the Pacific.
- The Peru-Chile Trench is a Trench in the ocean.



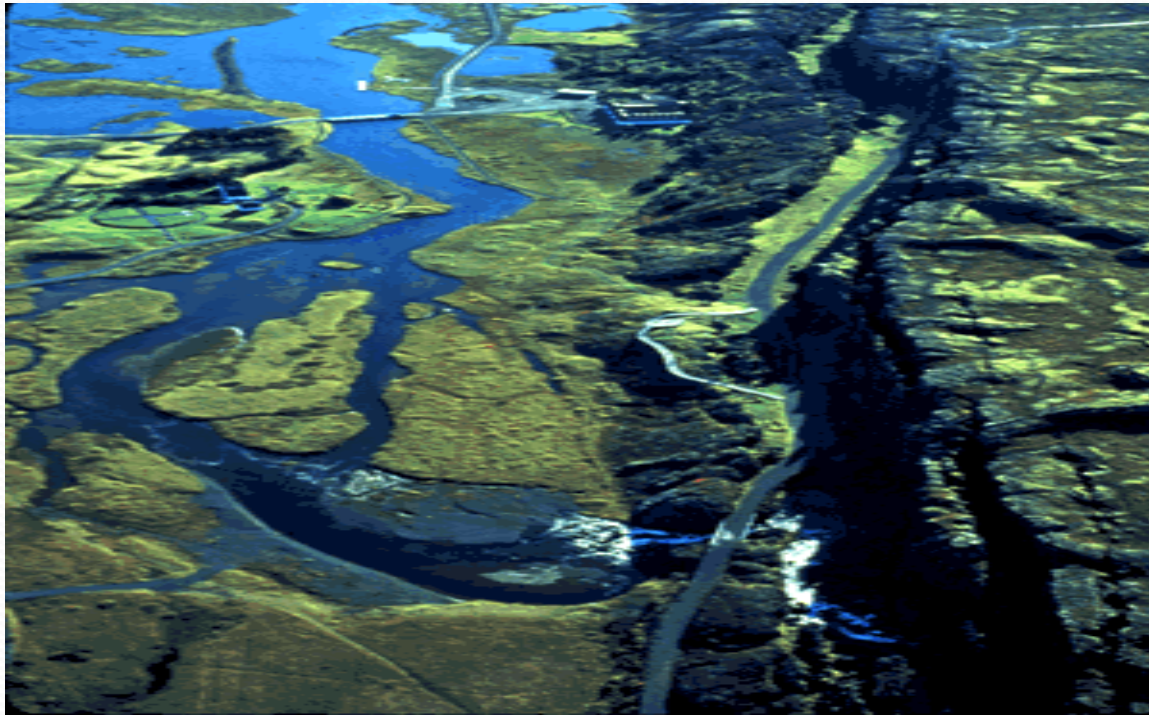
# Size of the Peru-Chile Trench

- The Peru-Chile Trench, also known as the Atacama Trench, is an oceanic trench about 160 kilometers off the coast of Peru and Chile.
- It reaches a maximum depth of 8,065 meters.
- is approximately 5,900 kilometers long



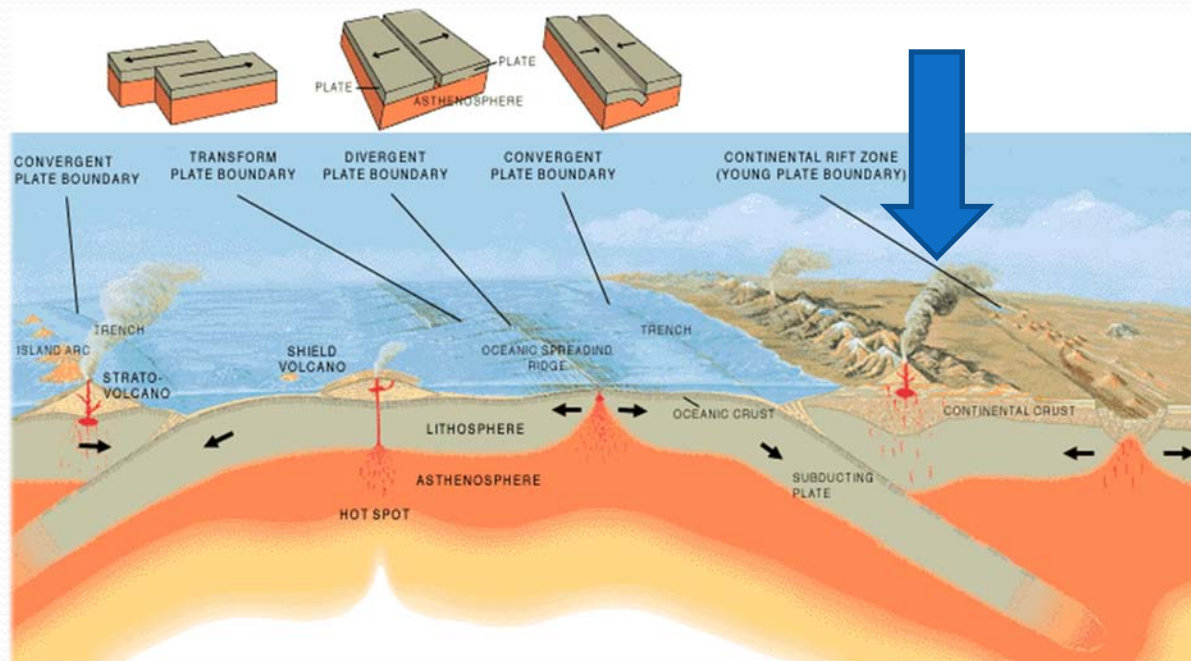
# How the Trench Was Created/Formed

- The Eastern edge of the Nazca Plate being subducted under the South American Plate.
- The Peru-Chile Trench formed millions of years ago



# Plate Boundaries Interact

- The Nazca Plate and the South American Plates interacted to form the Trench.
- The subducting plate created two seamounts ridges, the Nazca ridge and the Juan Fernandez Ridge.



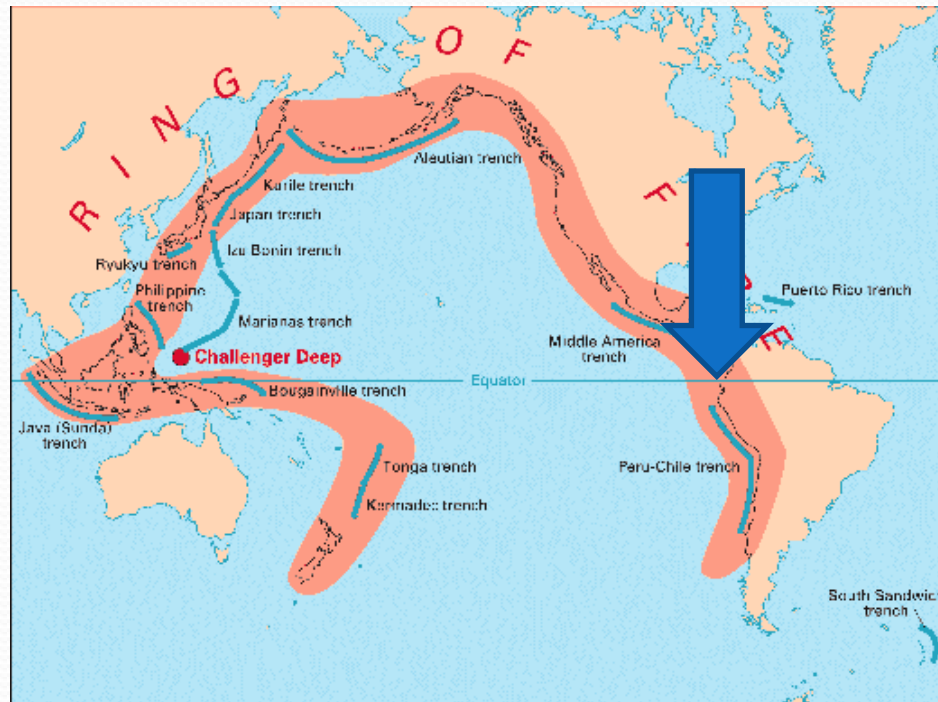
# What Occurred at The Peru-Chile Trench

- Off the coast of the Trench on February 27<sup>th</sup> 2010 there was a deadly earthquake with a magnitude of 8.8 and killed thousands of people.



# Uniqueness of the Peru-Chile Trench

- The Peru-Chile Trench is one of the largest trenches in the Ring of Fire.
- Was formed millions of generations ago.
- It is 8,065 meters deep.



# Animals of The Trench

- There are corals and reefs off the cost of the Trench with lots of sea life.



# Conclusion

- The Trench is a very magnificent place to see. Even though it was formed millions of years ago it is still getting deeper every year.

